

TAISEI



TAISEI KOGYO CO., LTD.
6F, Imaimitsubishi Bldg, 3-53-11, Minamiotsuka, Toshima-ku, TOKYO 170-8428 JAPAN
TEL:+81-3-6912-9922 FAX:+81-3-6912-5921

CCE-S013-0

May 18, 2026

Notice of Change to the Terminal Block Inside the DIN Connector

Dear Valued Customer,

We would like to express our sincere appreciation for your continued support and patronage.

Please be informed that the following change will be made regarding the subject matter stated above.

1. Applicable Products

(1) Electrical Contact Type Indicators

1. EA Type / WA Type
2. EH Type / WH Type
3. EF Type / WF Type
4. ED Type / WD Type
5. E4 Type / W4 Type
6. EG Type / WG Type
7. Some special indicator models

(2) Air-Cooled Heat Exchangers

1. ATK Type
2. Some special air-cooled heat exchanger models

2. Reason for Change and Details

Production of the terminal block currently used inside the DIN connector has been discontinued. Accordingly, the terminal block will be changed to a compatible successor model.

Please note that there will be no changes to the following:

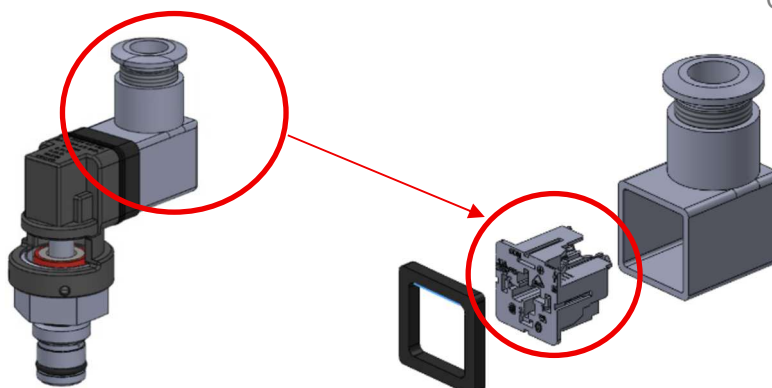
- Manufacturer
- Material
- Characteristics/specifications
- Wiring method
- Acquired safety standards

TAISEI



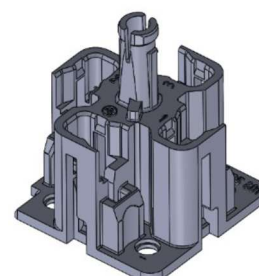
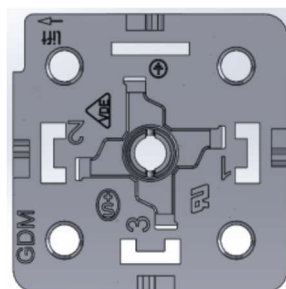
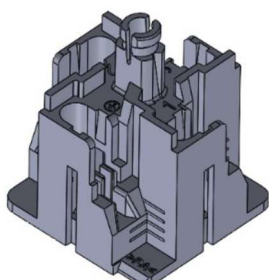
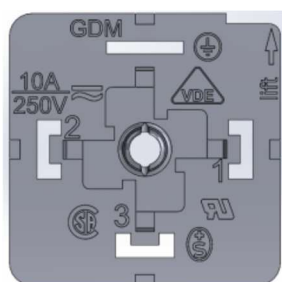
TAISEI KOGYO CO., LTD.
6F, Imaimitsubishi Bldg, 3-53-11, Minamitsuka, Toshima-ku, TOKYO 170-8428 JAPAN
TEL:+81-3-6912-9922 FAX:+81-3-6912-5921

CCE-S013-0



Parts Subject to Change

【Reference Example: EA-Type Indicator】



【Appearance of Terminal Block Before Change】

【Appearance of Terminal Block After Change】

3. Timing of Change

The change is scheduled to be implemented for products manufactured from December 2026.

Please note that the timing may vary depending on inventory conditions.

Should you have any questions or require further information, please feel free to contact our sales representative.