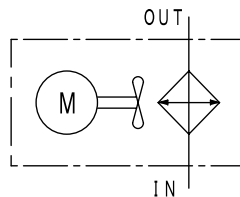


### Standard Model of Air-Cooled type Oil Cooler



#### Characteristics

- Light weight aluminum radiator
  - Electric connection is selectable from DIN connector and lead wire
  - Power connection is selectable from DIN connector and cable
  - Fan motor is selectable from single phase AC 100V and 200V
  - Other special specification is available: Different AC voltage or DC motor
- ※ Shape and each specification are different with standard model.



Air-cooled type cooler

### SPECIFICATION

Max working pressure *1	MPa	1.0	Model code	1552FA	2032FA	2432FA	
Max working temperature	Inside of tube	°C	100	Material	Radiator		Aluminum
	Outside of tube	°C	60		Support		Steel plate
Ambient conditions	Temperature	°C	-10~60	Coating	Radiator		Black
	Relative humidity	%	RH35~85		Fan motor • Support		Black
	Place of installation		Indoor *2		Fan guard		Plating
Fluid type		Mineral oil, Water glycol fluid *3	Weight (With connector)	kg	3.3(3.4)	3.2(3.3)	5.7(5.9)

Model code	Frequency (Hz)	Rated voltage (V)	Rated current (A)	Maximum load current (A)	Sound level *4 (dB)	Standard
ATK-□□□□FA-□□-1	50 / 60	100	0.52 / 0.44	0.61 / 0.51	56 / 58	UL • TUV
ATK-□□□□FA-□□-2		200	0.26 / 0.22	0.3 / 0.27		
ATK-□□□□FA-□□-15		115	0.36 / 0.3	0.42 / 0.41		
ATK-□□□□FA-□□-12		120	0.45 / 0.37	0.52 / 0.5		
ATK-□□□□FA-□□-22		220	0.23 / 0.19	0.27 / 0.23		
ATK-□□□□FA-□□-23		230	0.21 / 0.17	0.25 / 0.22		
Common to all models	Single phase, 2P, Built-in thermal protection					

### MODEL CODE

<Model code example>

**ATK** - **2032FA** - **03** - **A** - **2**

Code	Heat transfer area
1552FA	1.18㎡
2032FA	1.21㎡
2432FA	2.36㎡

Code	Connection diameter
02	Rc 1/4
04	Rc 1/2
03	Rc 3/8
04	Rc 1/2
03	Rc 3/8

Code	Connector
Blank	Non
A	Connector

Code	Fan motor voltage	
1	100V	Standard
2	200V	
15	115V	Special specification ☆
12	120V	
22	220V	
23	230V	

☆ Since price and lead time of different voltage type (special specification) are different with standard type, please ask us.

# PERFORMANCE GRAPH

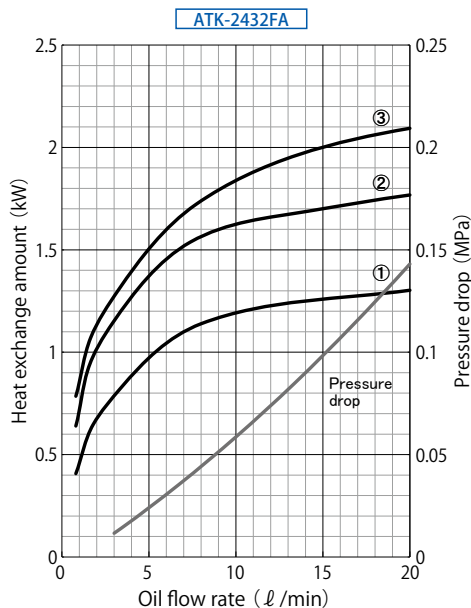
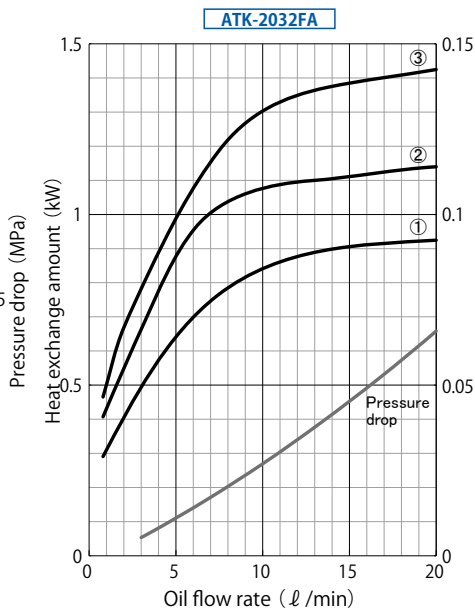
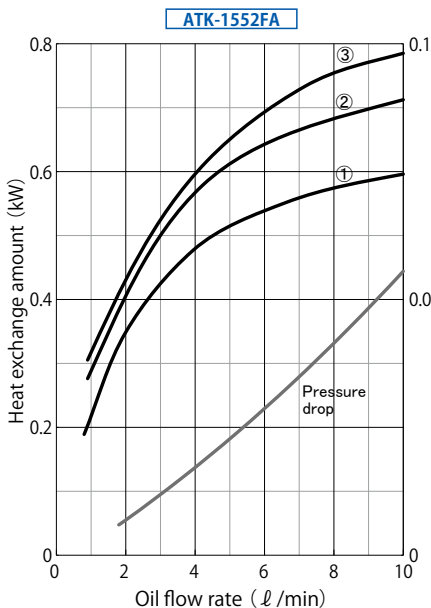
## Condition

Fluid type	Corresponding to ISO VG32
Oil inlet temperature	°C ① Room temperature +20°C ② Room temperature +30°C ③ Room temperature +35°C
Temp. of Pressure drop measurement	°C 55
Power frequency	Hz 50

## Allowable flow rate

Model code	ATK-1552FA	ATK-2032FA	ATK-2432FA
Flow rate	ℓ/min ~10	~20	~20

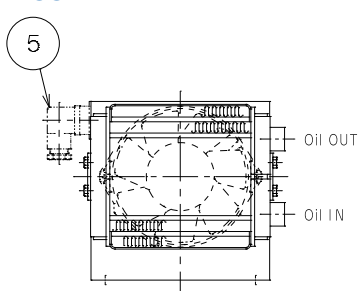
★ It is max value and It depends on each working condition.



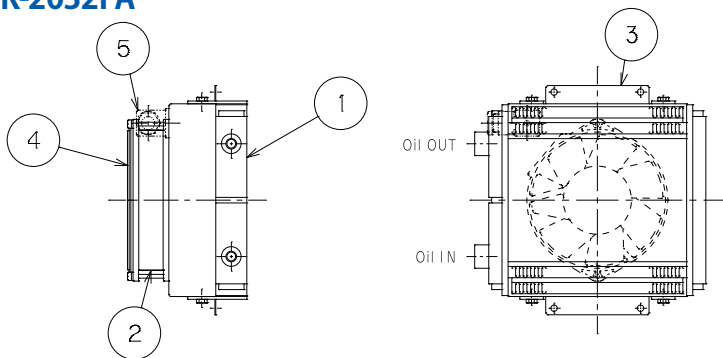
## CROSS SECTION

## PARTS LIST

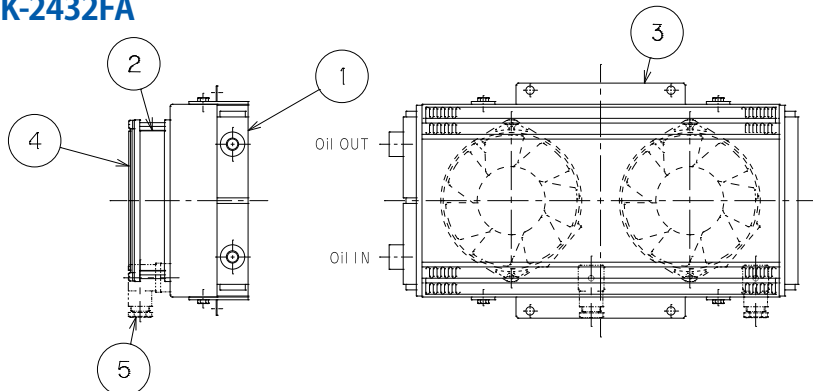
### ATK-1552FA



### ATK-2032FA



### ATK-2432FA

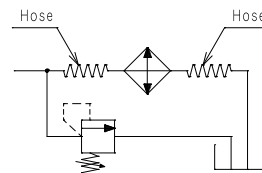


No.	Item	Qty	
1	Radiator	1	
2	Fan motor	1552FA,2032FA	1
		2432FA	2
3	Support	1	
4	Fan guard	1552FA,2032FA	1
		2432FA	2
5	Connector	1552FA,2032FA	1
		2432FA	2

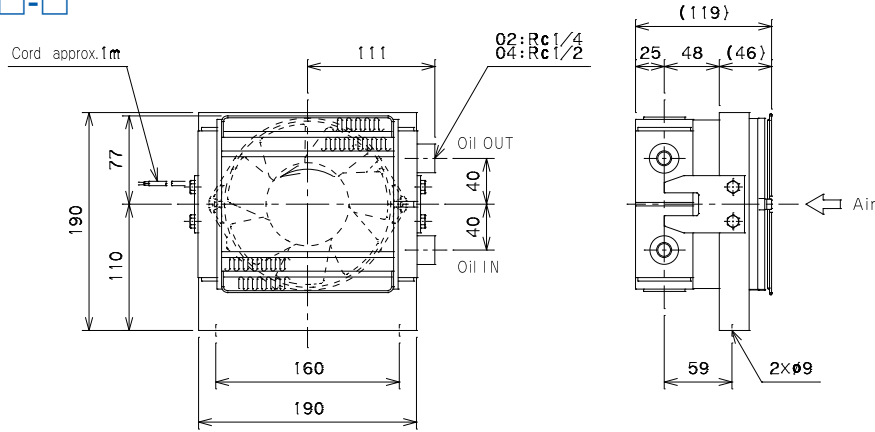
### <About pressure surge>

Allowable pressure fluctuation range is within 0.3MPa when using in a hydraulic circuit with repeated pressure fluctuation. Please do not install a component (filter or relief valve) after oil cooler in hydraulic circuit. Since our air-cooled type oil cooler (ATL, ATK, ATS, ATF) is aluminum radiator and it expands greatly, fluctuating pressure and vibration may cause breakdown of product. Moreover, please be sure that there is no rapid change of oil level in tank.

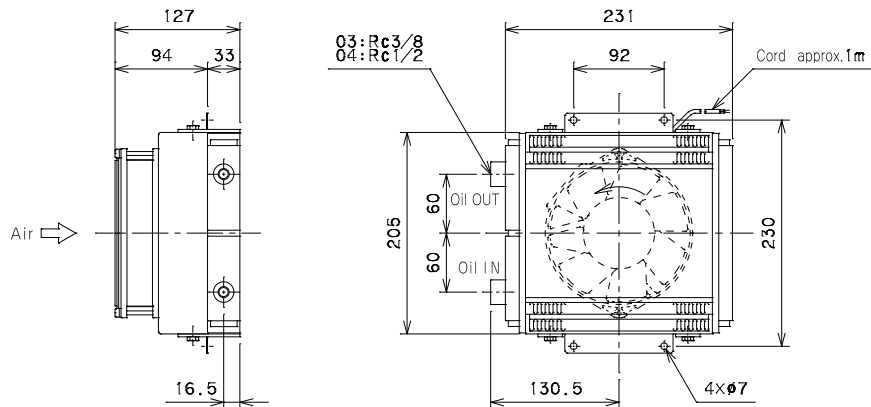
### Recommended piping ex.



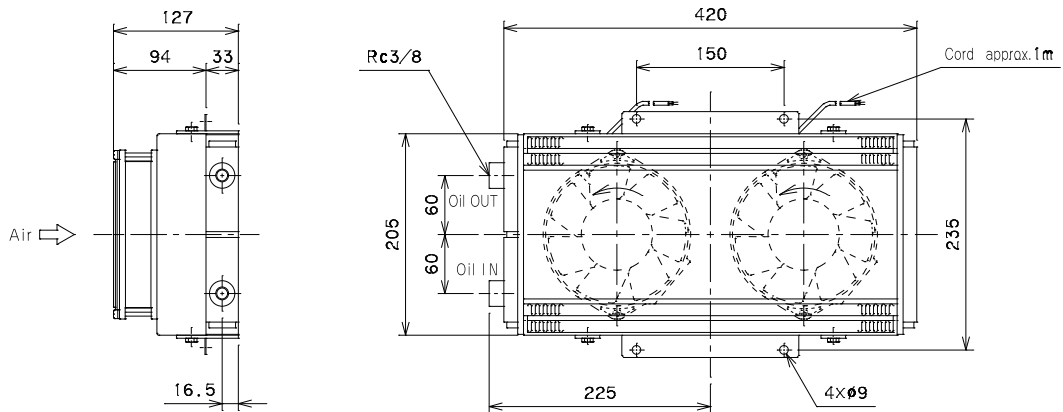
**ATK-1552FA-□□-□**



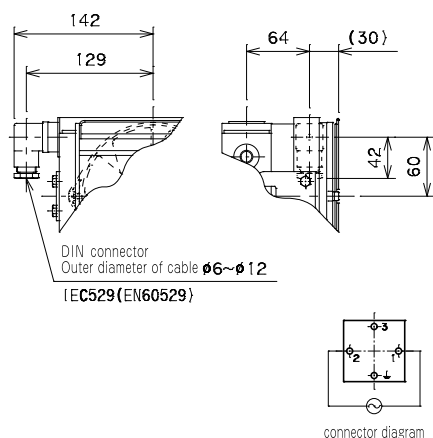
**ATK-2032FA-□□-□**



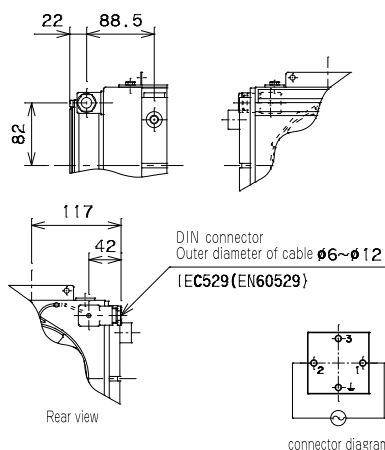
**ATK-2432FA-□□-□**



**ATK-1552FA-□□-□-A** A : With connector



**ATK-2032FA-□□-□-A** A : With connector



**ATK-2432FA-□□-□-A** A : With connector

