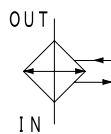
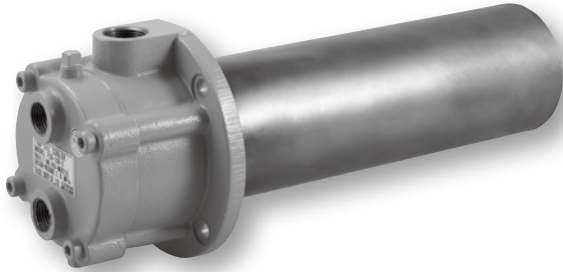


Tank-insert type Oil Cooler for space-saving



Water-cooled type cooler

Characteristics

- Space-saving and less piping by tank-insert type
- Appropriate for high temperature use by U-tube
- $\phi 9$ Low Fin Tube enables high cooling performance and compact design

SPECIFICATION

	Shell side		Tube side
Max working pressure MPa	1.0		1.0
Max working temperature °C	100		60
Pass structure	1 pass		2 passes
Fluid type	Standard	Mineral oil	Fresh water
	G	Water glycol fluid	
		Fatty ester fluid	

☆ TAISEI original high performance cooling tube enables 20% size reduction compared with general $\phi 12.7$ low fin tube.

Shell size code		1□□A	2□□A
Cooling tube type		$\phi 9$ Low Fin Tube ☆	
Main material	Cooling tube	Phosphorous-deoxidized copper	
	Body	FCD	
	Channel	FC	
	Shell	STKM	
Coating	Outside coating	Aqua blue	
	Inside of channel	Tar-free epoxy coating	
	Shell	Non-coating	

MODEL CODE

<Model code example>

G – **FCU** – **108A** – **0**

Code	Fluid type (Shell side)
Blank	Mineral oil
G	Water-glycol fluid
	Fatty ester fluid

Code	Heat transfer area	Shell size
108A	0.4m ²	$\phi 76.3$ (65A)
114A	0.7m ²	
122A	1.1m ²	
226A	1.3m ²	$\phi 114.3$ (100A)
234A	1.7m ²	
242A	2.1m ²	
256A	2.8m ²	

Code	Flow rate*1
0	Large
1	Medium
2	Small

* 1 "Flow rate" is for optimization of flow velocity by adjusting the number of baffle plate depend on flow amount variation.

PERFORMANCE GRAPH

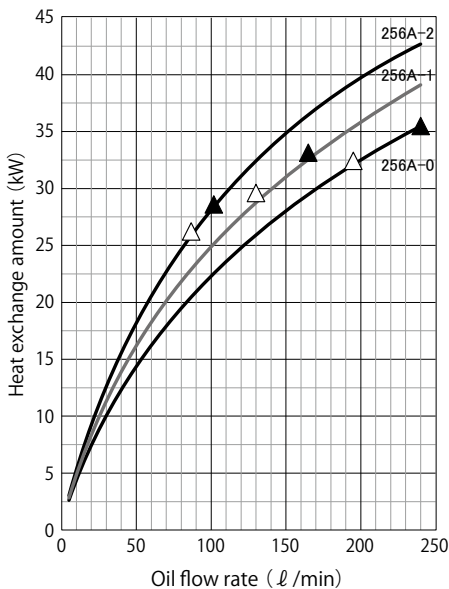
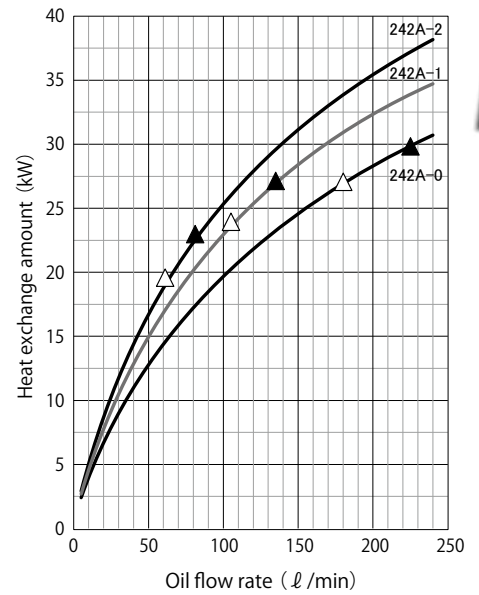
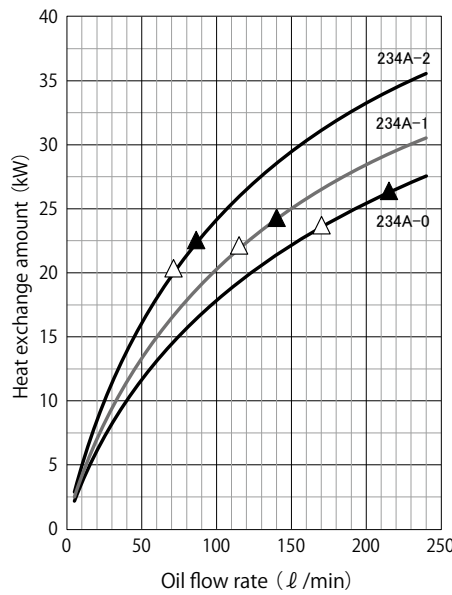
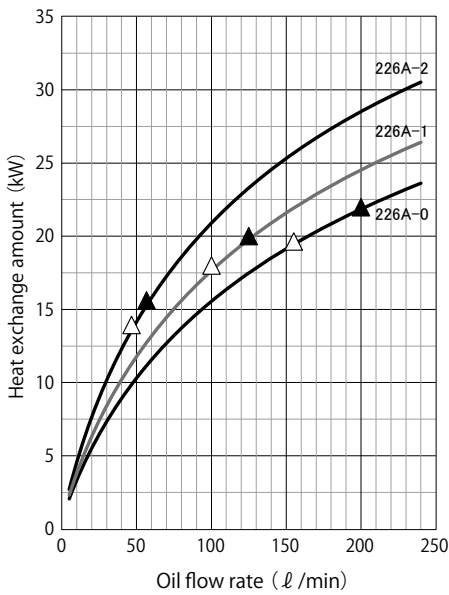
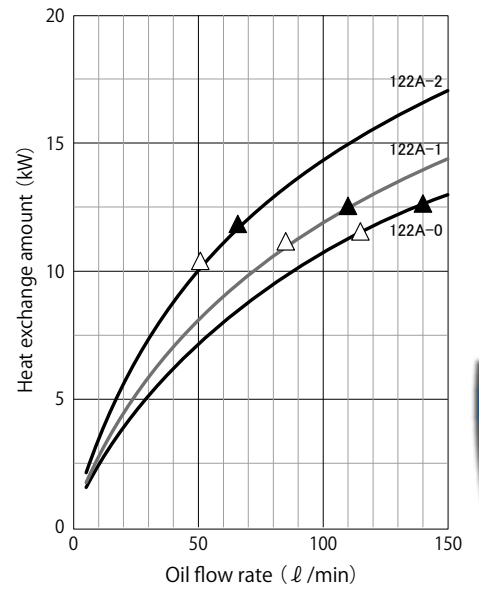
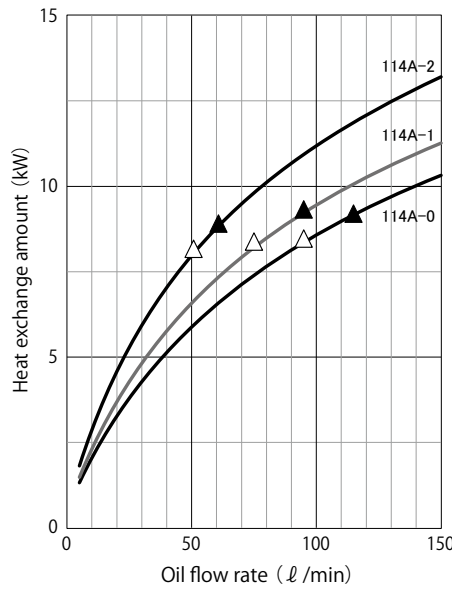
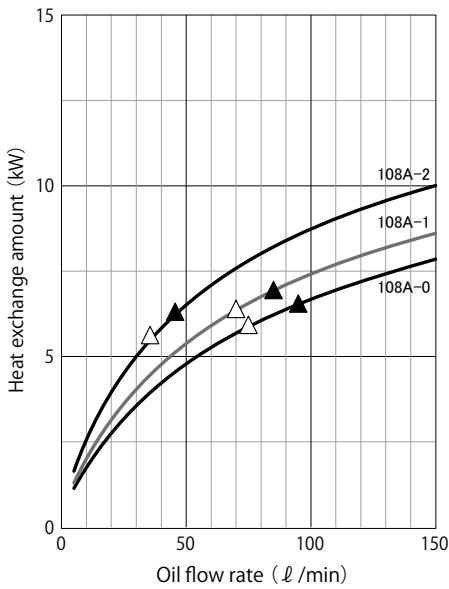
Condition

Fluid type		Corresponding to ISO VG46		Pressure drop	Shell side MPa	△ : 0.1
Inlet temperature	Shell side °C	55			Tube side MPa	▲ : 0.15
	Tube side °C	30				0.01 - 0.03
Flow rate at tube side		Max allowable flow rate		Scale coefficient at tube side	m ² C/W	0

Allowable flow rate

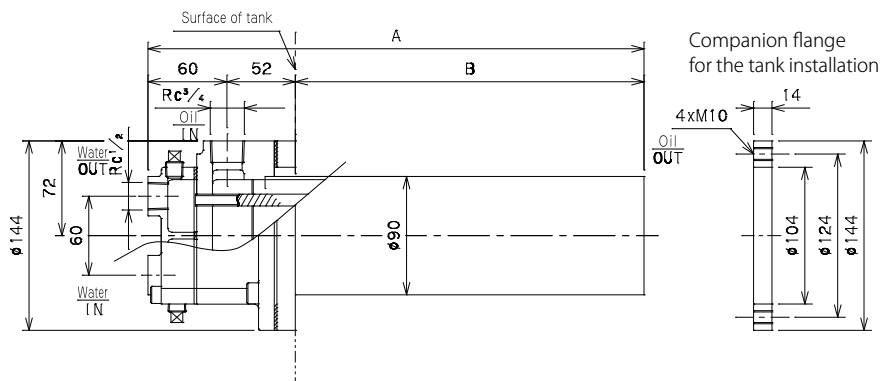
Model code	FCU-1□□A	FCU-2□□A
Shell side ℓ/min	~150	15~240
Tube side ℓ/min	10~30	15~55

★ It is max value and it depends on each working condition.



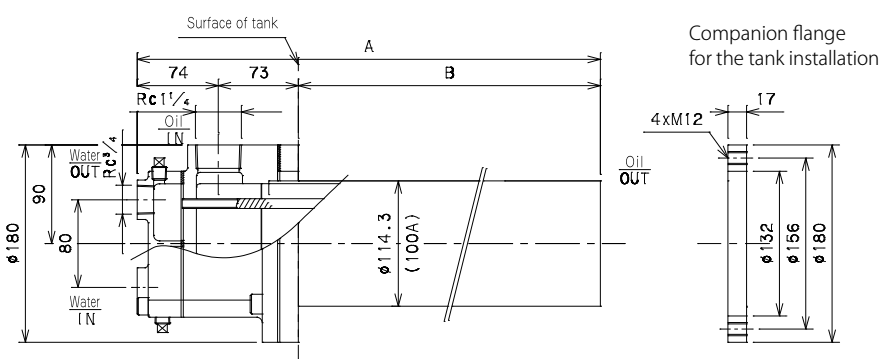
FCU-1□□A-□

Unit : mm



Model code	Length		Weight (kg)
	A	B	
FCU-108A-□	377	265	9
FCU-114A-□	577	465	10
FCU-122A-□	777	665	12

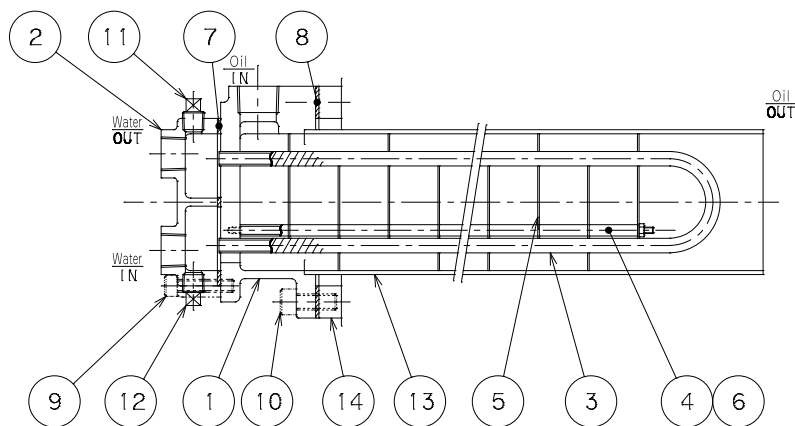
FCU-2□□A-□



Model code	Length		Weight (kg)
	A	B	
FCU-226A-□	547	400	18
FCU-234A-□	687	540	20
FCU-242A-□	827	680	23
FCU-256A-□	1057	910	27

CROSS SECTION

PARTS LIST



No.	Item	Qty
1	Body	1
2	Channel "A"	1
3	Fin tube	n*
4	Distance pipe	n*
5	Baffle plate	n*
6	Rod	4
7	Packing	1
8	Packing	1
9	Bolt	4
10	Bolt	4
11	Air vent plug	1
12	Drain plug	1
13	Shell	1
14	Companion flange	1

n* : The number of part depends on model.

SEALING PARTS LIST

No.	Item	7	8	Sealing parts set	
				Material	No. : 7,8
		Special packing non asbestos			Code of sealing parts set (Item code)
FCU-1□□A		t2×φ104/φ85,W6 (with partition)	t2×φ144/φ104	—	SA-FCU-100 (SSC000051)
FCU-2□□A		t2×φ132/φ109,W6 (with partition)	t2×φ180/φ132	—	SA-FCU-200 (SSC000052)

Upper side : Code or Size Under side : (Item code)

MAINTENANCE TOOL LIST

Item	Size (mm)	Item code	Remarks
Tube plug	D5.5x7.5x25	BZZ000021	For closing a tube when leakage occurs due to tube corrosion. 2 plugs are required for a tube.