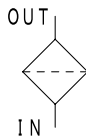




### Long-seller Tank-in type Suction Strainer

#### Characteristics

- For General hydraulic fluid
- Less widening of filtration gap and stable performance comparing with wire gauze
- Flat surface of notch wire (dimple wire) enables easy cleaning
- Pipe connection type is "Rc threaded"



oil filter

### SPECIFICATION

Inner diameter		02	03	04	06	08	10	12	16	20	24
Standard flow rate ☆ ℓ /min		7	17	30	41	60	160	200	270	425	530
Max working pressure MPa		-0.1 ~ 0									
Working temperature °C		-10 ~ 150									
Main material	Inlet,Fin tube,End plate	Aluminum, SS									
	Filtration media (Notch wire)	Stainless-steel									
Coating		Non-coating									
Weight kg		0.21		0.28	0.49	1.02	1.42	1.77	2.77	2.87	

☆ Standard flow rate is estimated by the condition of density: 0.86, kinematic viscosity: 32mm<sup>2</sup>/s, filtration rating: 150K, pressure drop: lower than 0.05MPa. (Since it is adjusted by characteristic of each product, value can be different in some cases.)

### MODEL CODE

<Model code example>

**SFN** — **08** — **150K**

Code	Inner diameter
02	Rc 1/4
03	Rc 3/8
04	Rc 1/2
06	Rc 3/4
08	Rc1
10	Rc1 1/4
12	Rc1 1/2
16	Rc2
20	Rc2 1/2
24	Rc3

Code	Filtration rating
Notch wire (Dimple wire)	
200K	200Mesh
150K	150Mesh
100K	100Mesh
60K	60Mesh

Refer to P.15 -16 for detail information of filter element.

# FLOW RATE GRAPH

## Condition

Fluid type : ISO VG32, Oil temperature : 40°C  
 (Density : 0.86,  
 Kinematic viscosity : 32mm<sup>2</sup>/s)  
 Filtration rating : 150W (150Mesh)

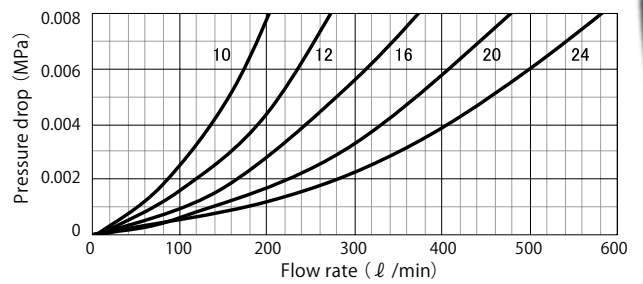
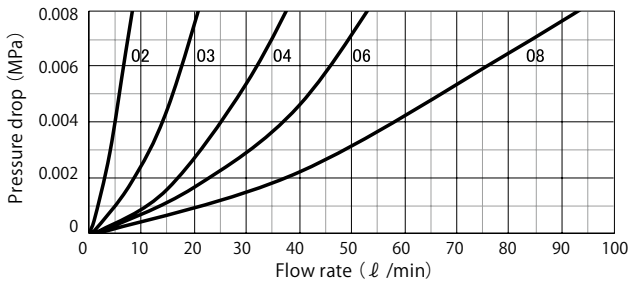
## How to calculate of pressure drop

Estimate pressure drop of filter assembly by following equation if required condition is different:

$$\text{Pressure drop of filter (Non case suction)} = \frac{\text{Fluid density}}{0.86} \times \frac{\text{Kinematic viscosity}}{32} \times \text{Pressure drop of filter element at density of 0.86, kinematic viscosity of 32}$$

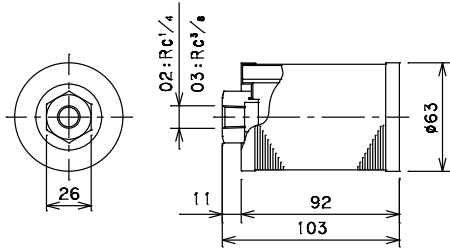
★ Pressure drop of filter (non case suction) is proportional to fluid density and kinematic viscosity.

## 1 SFN model Pressure drop

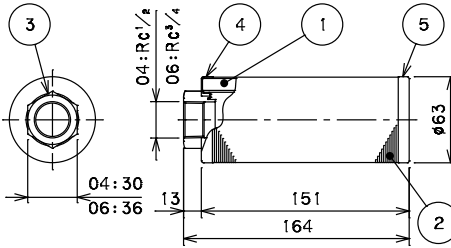


## DIMENSION • PARTS LIST

### SFN-02,03-□□

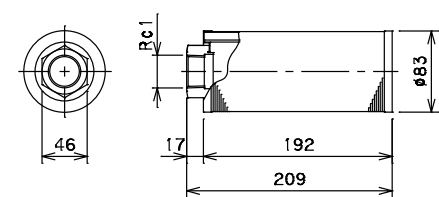


### SFN-04,06-□□

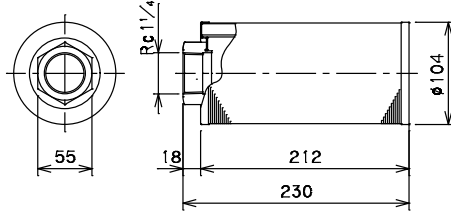


No.	Item	Qty
1	Fin tube	1
2	Notch wire	1
3	Coupling	1
4	End plate	1
5	End plate	1

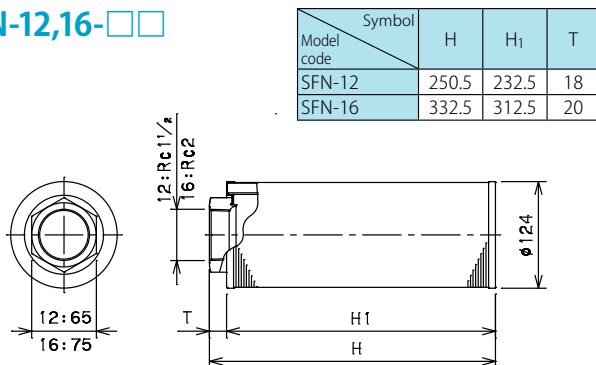
### SFN-08-□□



### SFN-10-□□



### SFN-12,16-□□



### SFN-20,24-□□

